

# HERFLEX SCB50-SCB75

## Bridge Expansion Joints

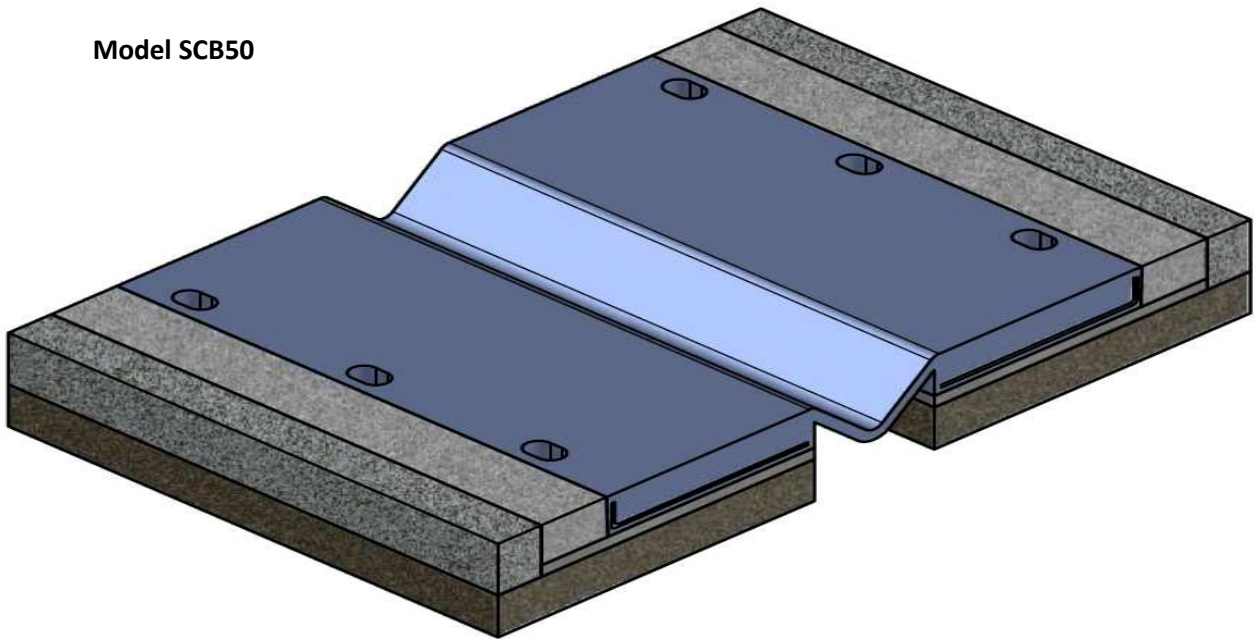
Designed to accommodate movement in structures that don't support heavy and intense traffic, with a low load transfer to boards or slabs. Maximum traffic comfort and durability.

Both profiles are supplied in 1.85m lengths, for their anchoring to board or forging using quimically fixed anchors.

Movement is absorbed by deformation of a resistant central membrane. Impact loads are absorbed by the elastomer and are not directly transmitted to the fixing anchors

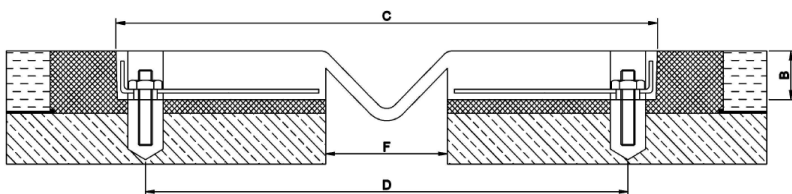
Models HERFLEX SCB50 and SCB75 cover a movement range of 50mm and 75mm respectively.

### Model SCB50

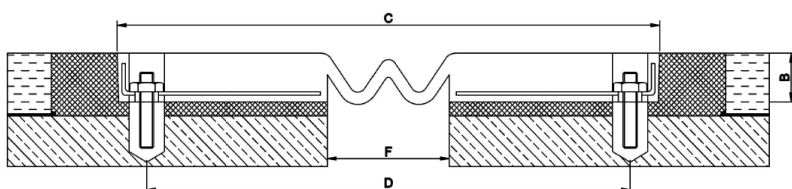


### Main applications:

- Bridge boards
- Pedestrian bridges
- Multi-storey car parks



SCB 50	
B(mm)	34
C(mm)	209
D(mm)	148
F min-max(mm)	25-40
Movement(mm)	50



SCB 75	
B(mm)	35
C(mm)	220
D(mm)	162
F min-max(mm)	35-50
Movement(mm)	75

## **Technical information**

Elastomer properties	Value	Test method
Hardness	62±5 Shore A	ASTM D2240
Elongation at break	>450 %	ASTM D412. Muestra C
Tensile strength	>15 Mpa	ASTM D412. Muestra C
Rubber-steel adhesion	>8 N/mm	ASTM D429 Método B
Low temperature strength	Uncrystallized	ASTM D746 (1hour at -40º)
Ozone resistance	No cracks	ASTM D1171 (48 hours at 38ºC;25 PPHM)
Compression set	<20%	ASTM D395 MétodoB(24 hours at 70ºC)
Thermal aging	Tensile strength Max -20% Elongatio at break máx.-25%,min+10% Hardness máx. ±5 Sh.A	Aging ASTM D573 (168 HOURS AT 70ºC)

Metal component:  
Steel fabricated acc. EN10025 Type SC235

### Notes:

Information on this technical sheet is merely indicative and is based on laboratory experimental results. HERFLEX SYSTEMS does not accept any responsibility if any of the data supplied suffers any variations or if is not correct. In the same way, any recommendation or product use suggestions are provided without any guarantee as the mode of use cannot be controlled by HERFLEX SYSTEMS. Therefore, it is the responsibility of the customer to make sure that the product is appropriate for the required application, as well as its correct usage.

## **HERFLEX SISTEMAS, S.A**

Polígono Industrial Torrelarragoiti, Parcela 8A, Pabellones 1-2-3-48170 Zamudio(Vizcaya)

Tel.:+34 944 520 439- [comercial@herflex.es](mailto:comercial@herflex.es)